



US008236297B2

(12) **United States Patent**
Manzo et al.

(10) **Patent No.:** **US 8,236,297 B2**
(45) **Date of Patent:** **Aug. 7, 2012**

(54) **METHOD OF TREATING LACTOSE INTOLERANCE USING GENETICALLY ENGINEERED BACTERIA**

6,833,260	B1	12/2004	Ruch
2004/0121041	A1	6/2004	Van Beckhoven et al.
2004/0265856	A1*	12/2004	Peltonen et al. 435/6
2005/0100535	A1	5/2005	Farmer
2007/0266451	A1*	11/2007	Chen et al. 800/14

(76) Inventors: **Kenneth Manzo**, Shohola, PA (US); **Jay Sharma**, San Pedro, CA (US)

FOREIGN PATENT DOCUMENTS

(*) Notice: Subject to any disclaimer, the term of this patent is extended or adjusted under 35 U.S.C. 154(b) by 653 days.

JP	51098244	A1	6/1978
JP	2003 285218	A1	3/2005
KR	2001 00027768	A1	11/2002
KR	2002 000004436	A1	7/2003
KR	2002 000072758	A1	5/2004

(21) Appl. No.: **11/871,113**

OTHER PUBLICATIONS

(22) Filed: **Oct. 11, 2007**

Naim et al., 1991, J Biol. Chem. 266:12313-12320.*
 Rolfe et al., 2000, J. Nutr. 130:396S-402S.*
 Mantei, N. et al. "Complete primary structure of human and rabbit lactase-phlorizin hydrolase[. . .]", EMBO J., 1988, v.7, No. 9, p. 2705-2713.
 Levri, K. et al. "Do probiotics reduce adult lactose intolerance?", J. Fam. Pract., 2005, v. 54, No. 7 p. 613-620.
 Saltzman, J. et al. "A randomized trial of *Lactobacillus acidophilus* BG2FO4 to treat lactose intolerance", Am. J. Clin. Nutr, 1999, v. 69, p. 140-146.

(65) **Prior Publication Data**

US 2009/0098087 A1 Apr. 16, 2009

(51) **Int. Cl.**

A01N 63/00 (2006.01)
C12N 15/00 (2006.01)
C12N 1/20 (2006.01)

(Continued)

(52) **U.S. Cl.** **424/93.45**; 424/93.1; 424/93.2; 435/320.1; 435/252.9

(58) **Field of Classification Search** None
See application file for complete search history.

Primary Examiner — Robert M Kelly
Assistant Examiner — Kelaginamane T Hiriyanna
 (74) *Attorney, Agent, or Firm* — Sanjesh Prabha Sharma; Chen Yoshimura LLP

(56) **References Cited**

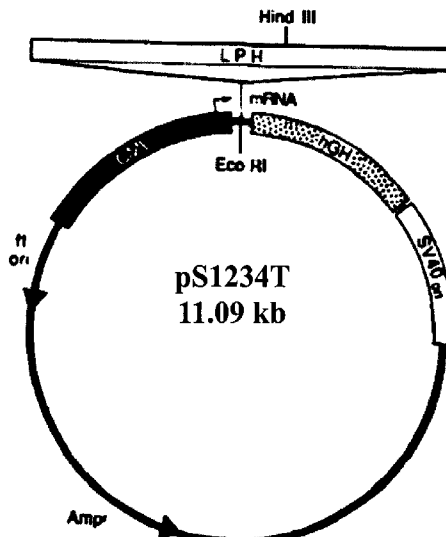
U.S. PATENT DOCUMENTS

2,762,749	A	9/1956	Myers
3,620,924	A	11/1971	Harvey
4,179,335	A	12/1979	Long
4,237,230	A	12/1980	Iida
4,323,651	A	4/1982	Long
5,633,012	A	5/1997	Ford
5,952,021	A	9/1999	Santus
6,008,027	A	12/1999	Langner
6,110,456	A	8/2000	During
6,562,339	B2	5/2003	Eisenhardt
6,599,882	B1	7/2003	Rogoff

(57) **ABSTRACT**

The present invention relates to genetically engineered bacteria that are able to colonize the mammalian intestine and actively produce mammalian lactase (lactose-phlorizin hydrolase or LPH). This lactose-digesting enzyme is stable and active under the conditions normally found in the mammalian small intestine. Experimental subjects colonized with the genetically engineered bacteria show improved ability to digest lactose in dairy foods.

5 Claims, 1 Drawing Sheet



OTHER PUBLICATIONS

Hertzler, S. et al. "Kefir improves lactose digestion and tolerance in adults with lactose maldigestion", J. Am. Diet. Assoc., 2003, v. 103, No. 5, p. 582-587.

Jost et al. Functional diversity and interactions between the repeat domains of rat intestinal lactase, Biochem. J. 327:95-103 (1997).
USP27, official monograph p. 1062-1063 (2004).

* cited by examiner

FIGURE 2

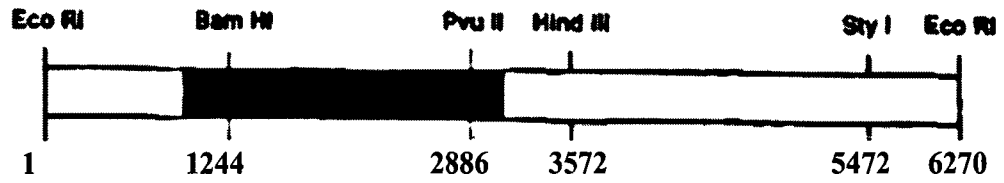
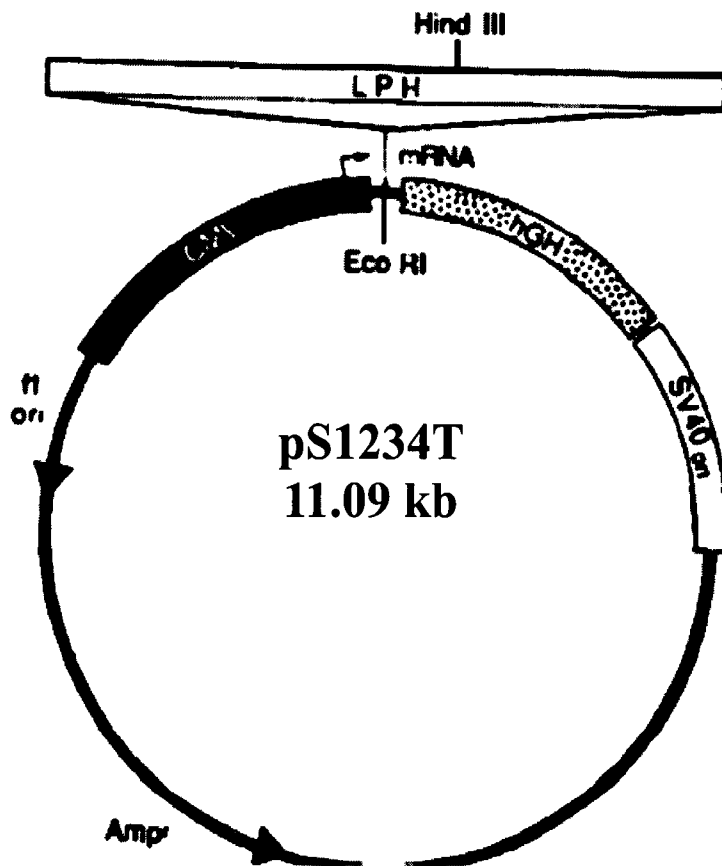


FIGURE 1



METHOD OF TREATING LACTOSE INTOLERANCE USING GENETICALLY ENGINEERED BACTERIA

BACKGROUND OF THE INVENTION

Lactose Intolerance

Dairy foods are an important source of protein, riboflavin and calcium for the United States, Europe, Asia, Africa and the many other areas of the world. However, many individuals suffer from lactose intolerance. This condition results from absence or insufficient production of the enzyme lactase. Acquired lactase deficiency is the most common disorder of complex carbohydrate absorption throughout the world, affecting up to 75% percent of the world's population. In the United States, 15% of Caucasians, over 50% of Hispanics and over 80% of African Americans suffer from lactose intolerance. The disorder is characterized by gastrointestinal symptoms of excessive gas production, abdominal pain, cramps, bloating and diarrhea after excessive consumption of lactose-containing foods such as dairy and dairy-based products.

In infancy, mammals have a high level of lactase activity in the lining of the upper intestinal tract, because they depend on lactose as the primary carbohydrate in their diet. However, in humans, the lactase expression is diminished by about 90% between ages two and five. This condition is called primary lactase deficiency. Many Northern Europeans, some Western Europeans, Mediterraneans and their descendants carry a mutation that prevents this natural decrease in lactase production. These individuals are able to consume milk as adults. However, large portions of the world population, such as Southern Europeans, East Asians and Sub-Saharan Africans have primary lactase deficiency.

Secondary lactase deficiency results from injury or disease of the small intestine. For example, celiac disease, inflammatory bowel syndrome (IBS) and Crohn's disease are often accompanied by lactase deficiency. These diseases occur in all ethnic groups.

Lactose Metabolism

Lactose is a disaccharide of glucose and galactose linked by a beta-D-glycosidic bond. The disaccharide is digested into its individual sugars by the lactase (beta-D-galactosidase) produced in the small intestine by the cells of the intestinal brush border. Glucose and galactose are absorbed in the small intestine. When lactase is absent from the small intestine, undigested lactose reaches the large intestine. There the resident bacteria metabolize lactose through fermentation generating gas. The gas is responsible for symptoms such as pain, pressure, cramps and flatulence. In addition, the undigested lactose increases osmotic pressure in the intestine, causing increased excretion of water and diarrhea.

Supplementing Lactase

There are several ways of delivering lactase to the gastrointestinal tract. As a simplest method, one can ingest a tablet of the isolated enzyme. Enzymes that break down lactose may be isolated from a variety of microorganisms, such as yeast, bacteria and fungi, such as *Saccharomyces fragilis*, *Torula cermoris*, *Lactobacillus bulgaricus*, *Aspergillus oryzae*, *Aspergillus flavus* and *Asperillus niger*. For example, U.S. Pat. No. 2,762,749 teaches preparing a lactase enzyme from budding yeast (*Saccharomyces* and *Torula* genera) to supplement milk products where lactose crystallization is a problem. Lactase from fungi, such as *Aspergillus*, is described in U.S. Pat. No. 3,620,924. Isolating bacterial lactase (from the genus *Bacillus*) is described in U.S. Pat. Nos. 4,179,335, 4,237,230 and 4,323,651.

Several problems are associated with lactase replacement products. First, these products are not retained in the gastrointestinal tract. Lactase pills must be taken with each dairy-containing meal. When the subject forgets to take the pill, or is unaware that food contains dairy, the symptoms of lactose intolerance are bound to recur.

Another problem is that many lactase enzymes from other species function poorly in the mammalian small intestine. The pH of the duodenum, where most of the normal lactose digestion occurs, is between 6.0 and 6.5. In contrast, as taught in the U.S. Pat. No. 6,562,339, a fungal lactase has a pH optimum of 4.8 and is only 10% active at pH 6.5. Many bacterial beta-galactosidases have a pH optimum above 7.0. Fortunately, a few enzymes from the *Bacillus* genus, as described for example, in U.S. Pat. No. 4,179,335, have a pH optimum near 6.0.

Another way to supplement lactase involves ingesting live or killed lactase-producing bacteria. For example, it is known that persons with mild lactose intolerance are able to tolerate yogurt but not milk, although both products contain the same amount of lactose. This is due to the fact that bacteria present in yogurt, such as *Streptococcus thermophilus*, *Lactobacilli*, *Acidophilus* and *Bifidus* species, express functional lactase. Thus, to improve the ability to digest lactose, one may consume yogurt products containing live and active cultures of these bacteria. Alternatively, one can ingest capsules that contain lyophilized live yogurt bacteria, as taught for example, in the U.S. Pat. No. 6,008,027. For an enhanced effect, bacteria can be combined with isolated lactase in the same enterically coated capsule, as taught in the U.S. Pat. No. 5,952,021 or Application Publication No. 2005/0100535.

Besides yogurt bacteria, other lactase-producing species can be used to improve lactose tolerance. For example, Korean researchers have isolated strains with lactase activity and good resistance to gastric acid. These strains come from *Lactobacillus fermentum*, (WIPO Publication KR3064030A), *Lactococcus lactis* (WIPO Publication KR4044300A) and *Lactobacillus plantarum* (WIPO Publication KR2088797A).

Unfortunately, physicians report limited success with treating lactose intolerance with naturally occurring bacterial cultures. The review of the literature conducted by family practitioners at the University of Pittsburg ("Do probiotics reduce adult lactose intolerance?") J Fam. Pract., 2005; v. 54, No. 7, p. 613-620) concluded that overall, the strategy was ineffective. The authors suggest that this is due to variation in bacterial viability and ability to produce lactase between the different dairy products and supplements. According to the study, with a few exceptions, most of these products do not provide sufficient lactase activity to alleviate the symptoms of lactose intolerance.

The symptoms of lactose intolerance were not relieved even when the most promising bacterium, *Lactobacillus acidophilus* was used. Among the yogurt bacteria, *L. acidophilus* has one of the highest natural levels of lactase and superior ability to adhere to the intestinal wall. Nevertheless, a Tufts University study "A randomized trial of *Lactobacillus acidophilus* BG2F04 to treat lactose intolerance", Am. J. Clin. Nutr. 1999, 69:140-146, concluded that even this bacterium was ineffective against the symptoms of lactose intolerance.

Using genetically-engineered bacteria to digest lactose is also known in the art. For example, U.S. Pat. No. 6,833,260 describes bacteria engineered to produce bacterial beta-galactosidase under the control of a constitutive promoter. Compared to the parent strain, the engineered bacteria produce more enzyme, although it is still of bacterial origin.

A more aggressive method of treating lactose intolerance involves gene therapy where the lactase gene is delivered directly into the cells of the intestinal wall, as described in U.S. Pat. No. 6,110,456. This method has several disadvantages. First, virus-driven gene therapy carries its own risks associated with the vector and the helper virus. Second, the target cells for the therapy, the intestinal epithelium, are constantly shedding. Unless the stem cells at the base of the inner layer of the intestinal wall are transformed with the new gene, the expression of lactase will be temporary. The newly emerging layers of intestinal cells would need to be repeatedly retransformed with another dose of the gene.

In summary, there is a need for a safe but long-lasting treatment of lactose intolerance. Ideally, one treatment would last for months without re-application. An ideal treatment would involve a lactase enzyme optimized for action under the conditions found in the mammalian small intestine.

SUMMARY OF THE INVENTION

The present invention relates to genetically engineered bacteria that are able to colonize the mammalian intestine and actively produce mammalian enzymes for the hydrolysis of lactose. The lactose-digesting enzymes are stable and active under the conditions normally found in the mammalian small intestine.

DEFINITIONS

“Small intestine” is the part of the gastrointestinal tract between the stomach and the large intestine. In vertebrate animals, small intestine is composed of duodenum, jejunum, and ileum.

“Large intestine” is the final part of the gastrointestinal tract in vertebrate animals.

“Resident bacteria” or “resident bacterial microflora” refers to bacteria that naturally colonize a host organ, such as gastrointestinal tract, or genetically altered strains of such bacteria.

“Gene” is the segment of DNA involved in producing a polypeptide chain; it includes regions preceding and following the coding sequence.

“Polypeptide” or “protein” is a polymer of amino acid residues encoded by at least a portion of the coding sequence of the gene.

“Enzymatically active protein” refers to a polypeptide that has enzymatic activity i.e. can catalyze specific chemical reactions of the proper substrates under proper conditions either within or outside of a cell where the polypeptide is produced.

“Genetically engineered bacteria” refers to bacterial cells that replicate a heterologous nucleic acid, or express a polypeptide encoded by a heterologous nucleic acid.

“Heterologous nucleic acid” is one that originates from a source foreign to the particular host cell, or, if from the same source, is modified from its original form.

“Promoter” is a nucleic acid sequence that acts as a signal sequence necessary to initiate transcription of a gene.

“Gene expression” as referred to in this application is the transcription (production of mRNA) followed by translation (production of a polypeptide encoded by the gene).

“Plasmid” is circular double-stranded DNA molecule, separate from chromosomal DNA and capable of autonomous replication and stable propagation in the host cell.

“Lactic acid bacteria” is a group of bacterial species comprised of Gram positive, low-GC-content, acid tolerant, non-sporulating, non-respiring rods or cocci that produce lactic

acid as the major metabolic end-product of carbohydrate fermentation. This group includes the genera of *Lactobacillus*, *Leuconostoc*, *Pediococcus*, *Lactococcus*, *Streptococcus*, *Aerococcus*, *Carnobacterium*, *Enterococcus*, *Oenococcus*, *Teragenococcus*, *Vagococcus*, and *Weissella*.

“Homolactic lactic acid bacteria” are a subgroup of lactic acid bacteria that catabolize one mole of glucose through glycolysis (Embden-Meyerhof-Parnas (EMP) pathway) to yield two moles of pyruvate that is further reduced to lactate. This subgroup includes the genera of *Lactococcus*, *Enterococcus*, *Streptococcus* and *Pediococcus*.

BRIEF DESCRIPTION OF THE DRAWINGS

FIG. 1 is a map of the plasmid pS1234T.

FIG. 2 is a detailed map of the insert in the plasmid pS1234T.

DETAILED DESCRIPTION OF THE INVENTION

The present invention provides intestine-colonizing bacteria, such as for example, *Lactobacillus acidophilus*, that are genetically altered to express mammalian lactase activity. Using genetically-engineered lactic acid bacteria has several advantages over the prior art method of lactase supplementation. First, bacteria are able to self-replicate while retaining the inserted lactase gene. Second, lactic acid bacteria are normally present in milk and yogurt have been proven safe over the millennia since humans have been ingesting these foods.

Bacterial Strains

The preferred embodiment involves the use of bacterium *Lactobacillus acidophilus*, however other related or similar species found in dairy products may also be used. The suitable bacteria belong to the group homolactic Lactic Acid Bacteria (LAB). Representative homolactic LAB genera include *Lactococcus*, *Enterococcus*, *Streptococcus*, *Pediococcus* and group I *lactobacilli*. Common examples from this group include *Lactobacillus acidophilus*, *Lactobacillus delbrueckii* subsp. *bulgaricus* (often referred to as *L. bulgaricus*), *Bifidobacterium lactis* and *Streptococcus thermophilus*.

Lactobacillus acidophilus was originally isolated from feces of infants. It can also be isolated from mouth and vagina of children and adults. In other animals, this bacterium can be found in the intestinal tract of turkeys and chickens and mouth and intestinal tract of rats and hamsters. A strain of this species is available from American Tissue Culture Collection (ATCC) as #53544. The strain was transformed with a recombinant genetic construct incorporating a coding sequence for a mammalian lactase.

Lactase Gene

The mammalian gene selected for this invention is a human gene encoding lactase-phlorizin hydrolase (LPH) (Mantei, et al., *EMBO J.* 7:2705-2713 (1988)). LPH, sometimes called small-intestinal lactase, is a major digestive enzyme in the small intestine of newborns. The enzyme is first synthesized as a 215-245 kDa precursor, comprising four tandemly repeated domains (I-IV). Proteolytic cleavage of the precursor separates LPH-alpha (domains I-II), devoid of enzymatic function, and liberates the mature enzyme, LPH-beta consisting of domains III and IV. LPH-beta has enzymatic activity and is anchored to the membrane via a C-terminal hydrophobic segment.

The lactase activity can be measured in vitro by any number of well-known methods. One method utilizes O-nitrophenyl-beta-D-galactopyranoside (ONPG) as a substrate and spectrophotometrically measures the product O-nitrophenol

(ONP). The amount of ONP is then divided by the reaction time and the weight of the reaction mixture or the number of cells in the reaction. A unit of lactase activity can be expressed in umol ONP/min per gram of dry weight.

Genetic Construct

The invention utilizes standard molecular biology techniques described in Sambrook et al., *Molecular Cloning, A Laboratory Manual* (3rd ed., 2001).

The genetic construct used for this invention is based on a plasmid vector pRLU61, capable of replicating in Gram-positive bacteria. See Jost et al., *Biochem. J.* 327:95-103 (1997).

The mRNA sequence of human LPH (in the cDNA form) has a Genbank accession no. X07994, and is reproduced below as SEQ. ID NO. 1.

Plasmid pS1234T (FIG. 1) was constructed by inserting the LPH cDNA (EcoRI fragment) into the unique EcoRI site of pRLU61. The full-length cDNA sequence of LPH was cloned as described in the Examples section. In the pS1234T, the LPH coding sequence is driven by a constitutive CMV promoter.

The full-length precursor of LPH (domains I-IV) contained a proteolytic cleavage signal between domains II and III. When introduced into the host cells, the precursor was cleaved by the host proteases as evidenced by the appearance of measurable lactase activity. The plasmid produced expression of LPH in both prokaryotic and eukaryotic cells, including rat epithelial cells and Chinese hamster ovary (CHO) cells and bacterial cells as further described below.

Experimental Animals

Rats (Sprague Dawley) were used for this experiment. The animals were divided into six groups: Groups A and B received no treatments and served as controls. Groups C and D ingested genetically engineered *Lactobacillus acidophilus*. Groups E and F ingested wild-type *Lactobacillus acidophilus*. In Groups C and E, prior to ingestion of the bacteria, the animal's gut was flushed with antibiotics for a day. Then the bacteria were ingested on the following day. This treatment enables the bacteria to gain competitive advantage over the preexisting microflora and take up residence in the small intestine.

After bacteria were given time to colonize the intestine, the animals were fed lactose-containing foods and their blood glucose level was monitored. At the same time, blood lactase activity was measured spectrophotometrically using ONPG as a substrate. As shown in Table 1, animals colonized with genetically engineered *Lactobacillus acidophilus* (Groups C and D) demonstrated the highest levels of lactase activity as measured directly and evidenced by the appearance of blood glucose.

Table 1 shows weekly measurements of blood glucose and lactase activity following the initial ingestion of bacteria. After a 12-hour overnight fast, the animals were fed lactose-containing food. A duplicate measurement was taken at each of the indicated time points in minutes after the animals consumed lactose-containing food. The measurements were taken weekly for five weeks (W1-W5). Blood glucose is expressed in mg/dL, lactase activity is expressed in units equal to umol ONP/min per gram of dry weight

TABLE 1

Blood Glucose and Lactase Activity										
Min	Blood Glucose					Lactase Activity				
	W1	W2	W3	W4	W5	W1	W2	W3	W4	W5
Group C (antibiotics pre-treatment and GE bacteria)										
0	125	125	125	125	125	110	110	110	110	110
	125	125	125	125	125	110	110	110	110	110
30	160	161	160	160	160	116	120	120	120	120
	160	160	161	161	175	116	121	120	120	120
60	175	177	170	175	180	135	135	136	136	136
	175	177	170	176	181	135	136	136	136	136
90	180	185	180	180	190	130	130	130	130	130
	180	185	182	180	190	130	130	130	130	130
120	190	190	190	190	190	140	142	140	140	140
	190	190	191	190	190	140	142	140	140	140
Group D (GE bacteria)										
0	125	125	125	125	125	110	110	110	110	110
	125	125	125	125	125	110	110	110	110	110
30	160	160	160	160	160	130	130	130	130	128
	160	160	160	160	160	130	130	130	130	128
60	185	185	180	180	180	160	160	160	160	160
	185	185	180	180	180	160	160	160	160	160
90	185	180	180	180	180	180	180	180	180	180
	185	180	180	180	180	180	180	180	180	180
120	180	180	185	185	180	180	180	180	180	180
	180	180	185	185	180	180	180	180	180	180
Group E (antibiotics pre-treatment and wild-type bacteria)										
Min	Blood Glucose, mg/dL					Lactase Activity				
	W1	W2	W3	W4	W5	W1	W2	W3	W4	W5
0	125	125	125	125	125	110	110	110	110	110
	125	125	125	125	125	110	110	110	110	110
30	140	140	135	130	130	120	125	125	120	120
	140	140	135	130	130	120	125	125	121	120

TABLE 1-continued

Blood Glucose and Lactase Activity										
60	160	160	161	160	160	130	130	130	135	130
	160	160	160	160	160	130	130	130	135	130
90	170	170	171	170	170	140	145	145	140	140
	170	170	170	170	170	140	145	145	141	140
120	175	175	172	170	170	140	145	140	140	145
	175	174	173	175	170	140	145	145	140	141

Group F (wild-type bacteria)										
Minutes	Blood Glucose, mg/dL					Lactase Activity				
	W1	W2	W3	W4	W5	W1	W2	W3	W4	W5
0	125	125	125	125	125	110	110	110	110	110
	125	125	125	125	125	110	110	110	110	110
30	135	135	135	135	135	125	120	125	125	125
	135	135	135	135	135	125	120	125	125	125
60	160	170	160	160	160	135	130	130	128	130
	160	170	160	160	160	135	130	130	128	130
90	170	150	160	160	160	140	135	138	135	135
	170	150	160	160	160	140	135	138	135	135
120	175	175	165	165	165	140	145	135	135	135
	175	175	165	165	165	140	145	135	135	135

Next, lactase activity in the stool was measured. As shown in Table 2, animals colonized with genetically engineered *Lactobacillus acidophilus* (Groups C and D) demonstrated the highest levels of lactase activity in the stool.

Table 2 shows weekly measurements of stool lactase activity following the initial ingestion of bacteria. A duplicate measurement was taken each week. The measurements were taken weekly for seven weeks (W1-W7). Lactase activity is expressed in units equal to umol ONP/min per gram of dry weight. The gender of the animals is also indicated as M or F.

TABLE 2

Stool Lactase Activity							
	W1	W2	W3	W4	W5	W6	W7
Group A (Control)							
M	110	110	110	110	110	110	110
M	110	110	110	110	110	109	109
F	110	110	110	110	110	109	109
F	110	110	110	110	110	110	109
Group B (Control)							
M	110	110	110	109	110	110	110
M	110	110	110	109	110	110	110
F	109	110	110	110	110	110	110
F	109	110	110	110	110	110	110
Group C (antibiotics pre-treatment and GE bacteria)							
M	202	200	202	202	202	202	202
M	202	200	202	202	202	202	202
F	202	201	201	202	202	202	202
F	202	201	201	202	202	202	202
Group D (GE bacteria)							
M	175	175	172	172	169	169	165
M	175	175	172	172	169	169	165
F	175	175	172	172	169	169	164
F	175	175	172	172	169	169	164
Group E (antibiotic pre-treatment and wild-type bacteria)							
M	150	150	149	150	136	136	136
M	150	150	149	149	136	136	136
F	150	149	150	150	136	136	136
F	150	149	150	150	136	136	136

TABLE 2-continued

Stool Lactase Activity							
	W1	W2	W3	W4	W5	W6	W7
Group F (wild-type bacteria)							
M	160	160	160	160	135	138	135
M	160	160	160	160	135	138	135
F	160	160	160	160	138	137	135
F	160	160	160	160	138	138	135

Finally, the animals were sacrificed and the intestinal lactase activity was measured directly. As shown in Table 3, animals colonized with genetically engineered *Lactobacillus acidophilus* (Groups C and D) demonstrated the highest levels of lactase activity in the extracts.

Table 3 shows lactase activity in umol ONP/min per gram of dry weight. For each animal a sample was taken from the stomach as well as two sections of the small intestine: duodenum and jejunum. The time is measured after the consumption of lactose-containing foods, following a 12-hour overnight fast. Experimental Groups A-F are as described above. The gender of animals is indicated as M or F.

TABLE 3

Lactase Activity in Intestinal Sections					
Study	Intestinal sections	Lactase activity			
		0 min	60 min	90 min	120 min
Group A	Stomach	0.09	0.08	0.06	0.03
	Duodenum	0.07	0.81	0.60	0.10
	Jejunum	0.04	0.13	0.14	0.16
Group B	Stomach	0.08	0.09	0.05	0.04
	Duodenum	0.08	0.91	0.81	0.10
	Jejunum	0.04	0.14	0.15	0.16
Group C	Stomach	0.65	0.60	0.75	0.65
	Duodenum	0.44	0.89	0.95	1.04
	Jejunum	0.33	1.44	1.52	1.67
Group D	Stomach	0.65	0.63	0.60	0.65
	Duodenum	0.44	0.90	0.99	1.05
	Jejunum	0.35	1.45	1.55	1.70

TABLE 3-continued

Lactase Activity in Intestinal Sections					
Study Group	Intestinal sections	Lactase activity			
		0 min	60 min	90 min	120 min
Group E	Stomach	0.42	0.45	0.50	0.40
	Duodenum	0.35	0.70	0.80	0.95
	Jejunum	0.20	0.99	1.02	1.30
Group F	Stomach	0.36	0.39	0.40	0.40
	Duodenum	0.29	0.69	0.71	0.92
	Jejunum	0.20	0.98	1.01	1.20

In addition, the microflora from different parts of the intestine was plated on the nutrient medium to assess the numbers of genetically engineered bacteria. As shown in Table 4, animals colonized with genetically engineered *Lactobacillus acidophilus* (Groups C and D) had the highest numbers of lactase-positive bacteria in the duodenum. There were no lactase-positive bacteria in the duodenum of the untreated animals (Groups A and B). Animals treated with wild-type *Lactobacillus acidophilus* (Groups E and F) had fewer lactase-positive bacteria in the duodenum than Groups C and D. In addition, Group C had the highest number of lactase-positive bacteria in the jejunum.

Table 4 shows the number of colony-forming units (CFUs) recovered from the intestinal extracts of each animal. The male and female animals in each group were used for each data point. Experimental Groups A-F are as described above. Each CFU is equal to 10 million bacterial cells (1×10^7 cells).

TABLE 4

Bacteria Recovered from Intestinal Sections		
Study Group	Intestinal sections	Bacterial counts CFU/ml
Group A	Stomach	0
	Duodenum	0
	Jejunum	10
Group B	Stomach	0
	Duodenum	0
	Jejunum	25
Group C	Stomach	0
	Duodenum	10
	Jejunum	30
Group D	Stomach	0
	Duodenum	15
	Jejunum	25
Group E	Stomach	0
	Duodenum	5
	Jejunum	10
Group F	Stomach	0
	Duodenum	6
	Jejunum	15

Although the background information describes lactose intolerance in relation to humans, the invention is not meant to be so limited. Other mammals, such as dogs, cats and rodents suffer from the same type of primary lactose intolerance in adulthood. Thus one of ordinary skill in the art would be able to use the teachings of this invention to develop a similar treatment of lactose intolerance in such mammals.

The present invention teaches genetically engineered bacteria that must be ingested in order to aid in the digestion of lactose. For oral administration, the composition containing the bacteria of the present invention may be enclosed in an enterically coated capsule.

Such capsules are well known in the art. For example, U.S. Pat. No. 5,633,012 describes methods of microencapsulating lyophilized *lactobacilli* using alginate, polyacryl and a variety of other organic polymers. U.S. Pat. No. 5,952,021 teaches encapsulating bacteria in a methylacrylate-based polymers sold under the brand names EUDRAGIT S® and EUDRAGIT L®. These polymers are insoluble in acid, but dissolve at neutral pH found in the small intestine.

As is demonstrated above, to maximize the competitive advantage of the ingested bacteria, a subject may be pre-treated with an antibiotic before the bacterial culture is administered. Suitable antibiotics are, for example amoxicillin and neomycin

As an alternative to lyophilization, the genetically engineered bacteria may be ingested as a live culture. The bacteria may be suspended in nutrient medium or prepared as a dairy product. Such products containing live bacteria are well known in the art. For example, Bio-K+ International, Inc. of Laval, Quebec, sells ½ oz cups of a yogurt-like product that contains a concentrated culture (up to 50 billion) of live and active cultures of *lactobacilli*. The cultures of the bacteria of the present invention may be prepared as a similar dairy product.

To maximize the survival of live cultures during the passage through the stomach, a subject may be pre-treated with a simple antacid such as baking soda or Alka-Seltzer® or an acid-reducing medication, such as omeprazole sold by Merck & Co. under the brand name PRILOSEC®.

EXAMPLES

The following examples are meant to illustrate but not limit the invention.

Bacterial Strains

Bacterial strain was isolated from raw milk. The cultures were grown at 37° C. The optimum temperature is 35-38° C. The upper limit of temperature tolerance is about 48° C., the lower limit is above 22° C., as no significant growth is observed at 22° C. Growth occurs at initial pH values between 5.0 and 7.0, but the optimum pH range is 5.5-6.0.

The cultures were grown in Terrific Broth medium (per liter: 12 g bacto-tyrptone, 24 g yeast extract, 4 ml glycerol, 0.017M KH_2PO_4 , 0.072M K_2HPO_4). Biochemical characteristics of this species are as follows: it metabolizes arginine into ammonia; ferments lactose into galactose and glucose, which in turn is further fermented into lactic acid; and also ferments amygdalin, cellobiose, fructose, galactose and maltose.

Genetic Construct

The plasmid pS1234T for expression in *L. acidophilus* was obtained by first assembling an insert (FIG. 2) in an *E. coli* plasmid PLPH. The plasmid PLPH was prepared in six steps.

First, screening of an intestinal cDNA library resulted in isolation of a 2,400 bp clone that contained a BamHI/PvuII fragment encompassing the putative LPH cleavage site. The BamHI/PvuII fragment was isolated for cloning.

Second, an EcoRI/BamHI fragment, corresponding to the nucleotides 1-1244 of the LPH cDNA was amplified by PCR using oligonucleotides LPH1 (SEQ ID NO. 2) and cLPH1300 (SEQ. ID NO. 3). This fragment was cloned into a commercially available vector pGEM4Z, generating a plasmid pLPH1. pLPH1 contained nucleotides 1-1244 of LPH cDNA.

Third, a PvuII/HindIII fragment corresponding to the nucleotides 2886-3572 of the LPH cDNA was amplified by PCR using oligonucleotides LPH2841 (SEQ ID NO. 4) and cLPH3600 (SEQ. ID NO. 5). This PvuII/HindIII fragment and the isolated BamHI/PvuII fragment described in the first

paragraph of this section were cloned by three-way ligation into pLPH1, using the BamHI and HindIII sites, generating a plasmid pLPH2. pLPH2 contained nucleotides 1-3572 of LPH cDNA.

Fourth, a HindIII/StyI fragment corresponding to the nucleotides 3572-5472 of the LPH cDNA was amplified by PCR using oligonucleotides LPH3541 (SEQ ID NO. 6) and cLPH5470 (SEQ. ID NO. 7).

Fifth, an StyI/EcoRI fragment corresponding to the nucleotides 5472-6270 of the LPH cDNA was amplified by PCR using oligonucleotides LPH5461 (SEQ ID NO. 8) and cLPH6270 (SEQ. ID NO. 9). This StyI/EcoRI fragment and the HindIII/StyI fragment described in the preceding paragraph were cloned by three-way ligation into pGEM4Z, using the EcoRI and HindIII sites, generating a plasmid pLPH3. pLPH3 contained nucleotides 3572-6270 of LPH cDNA.

Finally, the EcoRI/HindIII fragment from pLPH2 (nucleotides 1-3572 of LPH cDNA) and the HindIII/EcoRI fragment from pLPH3 (nucleotides 3572-6270 of LPH cDNA) were ligated in a three-way ligation into the EcoRI site of pGEM4Z, generating pLPH. The plasmid pLPH contained a full cDNA sequence of LPH.

LPH1 (SEQ ID NO. 2)
5'-AAAGAATTCGTTCTCTAGAAAATGGAGCTGTCTTGGCATGTAG-3';

cLPH1300 (SEQ ID NO. 3)
5'-CTGGCCACCTCCAGCGTCGCTTGGC-3'

LPH2841 (SEQ ID NO. 4)
5'-AAAGACAATGCCACTGGAGACATCG-3'

cLPH3600 (SEQ ID NO. 5)
5'-TGAACCTCTTCTCTCTCCTCAGTGAA-3'

LPH3541 (SEQ ID NO. 6)
5'-AACTGCAGCACTTAGCCACCTCCCG-3'

cLPH5470 (SEQ ID NO. 7)
5'-ATGCTTTGGGGATCCTTGGCAAGAGA-3'

-continued

LPH5461 (SEQ ID NO. 8)
5'-ACCCTTCTCTGCCAAGGATCCCCAA-3'

cLPH6270 (SEQ ID NO. 9)
5'-AAAAGAATTCGGACAGTCTTCTGTTTTTATTTTCGGAAAA-3'

For experimental expression in mammalian cells, the full-length PH sequence (EcoRI fragment containing nucleotides 1-6270) was subcloned into the EcoRI site of pCMV2 (Invitrogen, Carlsbad, Calif.) to generate pS1234T (FIG. 1).

Experimental Animals

Sprague Dowley rats were housed under standard conditions and fed a standard diet. Water was given ad libitum. For Groups D and F, the animals were pre-treated with amoxicillin or neomycin. For all groups, except control groups A and B, a suspension of bacterial cells was given with yogurt as food.

At the end of 14 weeks the animals were sacrificed. The following parameters were measured during the course of the study: blood glucose concentration, lactase activity in the blood and stool, blood pH and total body weight. At the end of the study, lactase activity in the intestinal contents and the composition of intestinal microflora were also measured.

Measuring Blood Glucose Concentration

To measure blood glucose concentration, blood was taken from the tail vein. 0.7 ml was collected from each animal. The test was done using a blood glucose meter.

Measuring Blood, Stool and Intestinal Lactase Activity

The lactase activity was determined by United States Pharmacopeia (USP) method (USP27, official monograph pages 1062-1063). The stool was dispersed in buffer prior to the assay. Sections of the intestine were dissected and the contents were dispersed in buffer prior to the assay.

Counting the Number of *Lactococci* in the Intestine

The numbers of genetically engineered *lactococci* and wild-type *lactococci* were measured by suspending the intestinal contents and plating serial dilution of the suspensions on solid medium. The *lactococci* were detected by microscopic examination of the bacterial flora under Olympus inverted microscope based on the bacterial cell's morphology. The genetically engineered *lactococci* were detected.

The above examples are provided to illustrate the invention and not to limit its scope. Other variants of the invention will be readily apparent to one of ordinary skill in the art and are encompassed by the appended claims.

SEQUENCE LISTING

<160> NUMBER OF SEQ ID NOS: 9

<210> SEQ ID NO 1

<211> LENGTH: 6274

<212> TYPE: DNA

<213> ORGANISM: Homo sapiens

<400> SEQUENCE: 1

```

gttcctagaa aatggagctg tcttgcatg tagtctttat tgccctgcta agtttttcat    60
gctggggggtc agactgggag tctgatagaa atttcatttc caccgctggt cctctaacca    120
atgacttgct gcacaacctg agtggtctcc tgggagacca gaggttctaac tttgtagcag    180
gggacaaaaga catgtatggt tgtcaccagc cactgcccac tttcctgcca gaatacttca    240
gcagttctcca tgccagtcag atcaccattt ataaggtatt tctgtcatgg gcacagctcc    300
tcccagcagg aagcaccagc aatccagacg agaaaacagt gcagtgctac cggcgactcc    360
tcaaggccct caagactgca cggcttcagc ccatggatcat cctgcaccac cagaccctcc    420
    
```

-continued

ctgccagcac cctccggaga accgaagcct ttgctgacct cttcgccgac tatgccacat	480
tcgcttcca ctcttcggg gacctagtgt ggatctggtt caccttcagt gacttggagg	540
aagtgatcaa ggagcttccc caccaggaat caagagcgtc acaactccag accctcagtg	600
atgcccacag aaaagcctat gagatttacc acgaaagcta tgcttttcag ggcggaaaac	660
tctctgttgt cctgcgagct gaagatatcc cggagctcct gctagaacca cccatatctg	720
cgcttgccca ggacacggtc gatttctct ctcttgattt gtcttatgaa tgccaaaatg	780
aggcaagtct gcggcagaag ctgagtaaat tgcagacat tgagccaaaa gtgaaagtgt	840
tcatttcaa cctaaaactc ccagactgcc cctccaccat gaagaacca gccagtctgc	900
tcttcagcct ttttgaagcc ataaataaag accaagtgtt caccattggg tttgatatta	960
atgagtttct gagttgttca tcaagttcca agaaaagcat gtcttgttct ctgactggca	1020
gcctggccct tcagcctgac cagcagcagg accacgagac cacggactcc tctcctgcct	1080
ctgctatca gagagtctgg gaagcatttg ccaatcagtc cagagcggaa agggatgcct	1140
tcttcagga tactttccct gaaggcttcc tctggggtgc ctccacagga gcctttaacg	1200
tggaggagg ctgggcccag ggtgggagag gggtgagcat ctgggatcca cgcaggcccc	1260
tgaacaccac tgaggccaa gcgacgctgg aggtggccag cgacagttac cacaaggtag	1320
cctctgacgt cgcctgctt tgcggcctcc gggctcaggt gtacaagttc tccatctcct	1380
ggtcccggat cttcccctg gggcacggga gcagccccag cctcccagge gttgcctact	1440
acaacaagct gattgacagg ctacaggatg cgggcatcga gcccatggcc acgctgttcc	1500
actgggacct gcctcaggcc ctgcaggatc atggtggatg gcagaatgag agcgtggtgg	1560
atgcttctct ggactatgag gccttctgct tctccacatt tggggaccgt gtgaagctgt	1620
gggtgacctt ccatgagccg tgggtgatga gctacgcagg ctatggcacc ggcagcacc	1680
ctcccggcat ctctgaccca ggagtggcct cttttaaggt ggctcacttg gtctcaagg	1740
ctcatgccag aacttggcac cactacaaca gccatcatcg cccacagcag caggggcacg	1800
tgggcattgt gctgaactca gactgggcag aaccctgtc tccagagagg cctgaggacc	1860
tgagagcctc tgagccttc ttgcacttca tgctgggctg gtttgacac cccgtctttg	1920
tggatggaga ctaccagcc accctgagga cccagatcca acagatgaac agacagtgtt	1980
cccatcctgt ggctcaactc cccgagtcca cagaggcaga gaagcagctc ctgaaaggct	2040
ctgctgattt tctgggtctg tcgcattaca cctcccgcct catcagcaac gccccaaaa	2100
acacctgcat ccctagctat gataccattg gaggttctc ccaacacgtg aacctgtgt	2160
ggccccagac ctcatcctct tggattcgtg tgggtcccctg ggggataagg aggetgttgc	2220
agtttgtatc cctggaatac acaagaggaa aagttccaat ataccttgcc gggaaatggca	2280
tgcccatagg ggaaagtga aatctctttg atgattcctt aagagtagac tacttcaatc	2340
aatatatcaa tgaggtgctc aaggctatca aggaagactc tgtggatgtt cgttcctaca	2400
ttgctcgttc cctcattgat ggcttogaag gcccttctgg ttacagccag cggtttggcc	2460
tgcaccacgt caacttcagc gacagcagca agtcaaggac tcccagaaa tctgcctact	2520
ttttactag catcatagaa aagaacgggt tcctcaccaa gggggcaaaa agactgctac	2580
cacctaatc agtaaacctc cctccaaaag tcagagcctt cacttttcca tctgaggtgc	2640
cctccaagge taaagtcgtt tgggaaaagt tctccagcca acccaagttc gaaagagatt	2700
tgttctacca cgggacgttt cgggatgact ttctgtgggg cgtgtcctct tccgcttacc	2760
agattgaagg cgcgtgggat gccgatggca aaggccccag catctgggat aactttacc	2820

-continued

acacaccagg	gagcaatgtg	aaagacaatg	ccactggaga	catcgctgt	gacagctatc	2880
accagctgga	tgccgatctg	aatatgctcc	gagctttgaa	ggtgaaggcc	taccgcttet	2940
ctatctcctg	gtctcgatt	ttcccaactg	ggagaaacag	ctctatcaac	agtcgatggg	3000
ttgattatta	caacaggctg	atcaatggct	tggtaggcaag	caacatcttt	cccaggtgga	3060
cattgttcca	ttgggacctg	ccccaggccc	tccaggatat	cggaggctgg	gagaatcctg	3120
ccttgattga	cttgtttgac	agctaogcag	acttttgttt	ccagaccttt	ggtgatagag	3180
tcaagttttg	gatgactttt	aatgagccca	tgtacctggc	atggctaggt	tatggctcag	3240
gggaatttcc	cccaggggtg	aaggacccag	gctgggcacc	atataggata	gcccacaccg	3300
tcatcaaagc	ccatgccaga	gtctatcaca	cgtacgatga	gaaatacagg	caggagcaga	3360
agggggtcat	ctcgctgagc	ctcagtacac	actgggcaga	gcccagtca	ccaggggtcc	3420
ccagagatgt	ggaagccgct	gaccgaatgc	tgcagttctc	cctgggctgg	tttgctcacc	3480
ccatttttag	aaacggagac	tatcctgaca	ccatgaagtg	gaaagtgggg	aacaggagtg	3540
aactgcagca	cttagccacc	tcccgcctgc	caagcttcac	tgaggaagag	aagaggttca	3600
tcagggcgac	ggccgacgtc	ttctgctca	acacgtacta	ctccagaatc	gtgcagcaca	3660
aaacaccag	gctaaacca	ccctcctacg	aagacgacca	ggagatggct	gaggaggagg	3720
acccttcgtg	gccttcacg	gcaatgaaca	gagctgcgcc	ctgggggacg	cgaaggctgc	3780
tgaactggat	caaggaagag	tatggtgaca	tcccattta	catcaccgaa	aacggagtgg	3840
ggctgaccaa	tccgaacacg	gaggatactg	ataggatatt	ttaccacaaa	acctacatca	3900
atgaggcttt	gaaagcctac	aggctcgatg	gtatagacct	tcgagggtat	gtcgcctggt	3960
ctctgatgga	caactttgag	tggctaaatg	gctacacggt	caagtttggg	ctgtaccatg	4020
ttgatttcaa	caacacgaac	aggcctcgca	cagcaagagc	ctccgccagg	tactacacag	4080
aggtcattac	caacaacggc	atgccactgg	ccagggagga	tgagtttctg	tacggacggt	4140
ttcctgaggg	cttcatctgg	agtgcagctt	ctgctgcata	tcagattgaa	ggtgcgtgga	4200
gagcagatgg	caaaggactc	agcatttggg	acacgttttc	tcacacacca	ctgagggttg	4260
agaacgatgc	cattggagac	gtggcctgtg	acagttatca	caagattgct	gaggatctgg	4320
tcaccctgca	gaacctgggt	gtgtcccact	accgtttttc	catctcctgg	tctcgcatec	4380
tccttgatgg	aaccaccagg	tacatcaatg	aagcgggcct	gaactactac	gtgaggctca	4440
tcgatacact	gctggccgcc	agcatccagc	cccagggtgac	catttaccac	tgggacctac	4500
cacagacgct	ccaagatgta	ggaggctggg	agaatgagac	catcgtgcag	cggtttaagg	4560
agtatgcaga	tgtgctcttc	cagaggctgg	gagacaaggt	gaagttttgg	atcacgttga	4620
atgagccctt	tgtcattgct	taccagggct	atggctacgg	aacagcagct	ccaggagtct	4680
ccaataggcc	tggcactgcc	ccctacattg	ttggccacaa	tctaataaag	gctcatgctg	4740
aggcctggca	tctgtacaac	gatgtgtacc	gogccagtca	aggtggcgtg	atttccatca	4800
ccatcagcag	tgactgggct	gaaccacagag	atccctctaa	ccaggaggat	gtggaggcag	4860
ccaggagata	tgttcagttc	atgggaggct	ggtttgca	tcctattttc	aagaatggag	4920
attacaatga	ggtgatgaag	acgcggatcc	gtgacaggag	cttggctgca	ggcctcaaca	4980
agtctcggct	gccagaattt	acagagagtg	agaagaggag	gatcaacggc	acctatgact	5040
tttttgggtt	caatcactac	accactgtcc	tcgcctacaa	cctcaactat	gccactgcca	5100
tctcttcttt	tgatgcagac	agaggagtgt	cttccatcgc	agatcgctcg	tggccagact	5160
ctggctcctt	ctggctgaag	atgacgcctt	ttggcttcag	gaggatcctg	aactggttaa	5220

-continued

```

aggaggaata caatgaccct ccaatztatg tcacagagaa tggagtgtcc cagcgggaag 5280
aaacagacct caatgacct gcaaggatct actaccttcg gacttacatc aatgaggccc 5340
tcaaagctgt gcaggacaag gtggaccttc gaggatacac agtttgagtg gcgatggaca 5400
attttgagtg ggccacagge ttttcagaga gatttggctc gcattttgtg aactacagtg 5460
acccttctct gccaaagatc cccaaagcat cagcgaagtt ctacgcctct gtggtccgat 5520
gcaatggctt ccctgacccc gctacagggc ctacagcttg tctccaccag ccagatgctg 5580
gaccacccat cagccccgtg agacaggagg aggtgcagtt cctggggcta atgctcggca 5640
ccacagaagc acagacagct ttgtacgttc tcttttctct tgtgcttctt ggagtctgtg 5700
gcttgccatt tctgtcatac aagtaactgca agcgcctctaa gcaagggaaa acacaacgaa 5760
gccaacagga attgagcccc gtgtcttcat tctgatgagt taccacctca agttctatga 5820
agcaggccta gtttcttcat ctatctttac cggccaccaa acaccttagg gtetttagact 5880
ctgtgtgatac tggacttctc cataaagtcc tgctgcaccg ttagagatga ctttaactct 5940
gaatgatttc gacttgctga gtaaaatgga aatatctcca tcttgctcca gtatcagagt 6000
tcatttgggc atttgagaag caagtagctc ttgcggaaac gtgtagatac tggctctagtg 6060
ggtctgtgaa ccacttaatt gaacttaaca gggctgtttt aagtttcaga gttgtaagg 6120
gttgtaagg gagcaaaaac cgtaaaaac cttcctataa gaagaaatca actccattgc 6180
atagactgca atatcatctc ctgccctctc gcaagctctc cctagcttca catcttgtgt 6240
tttcagaaa ataaaaacag aagactgtcc tttc 6274

```

```

<210> SEQ ID NO 2
<211> LENGTH: 42
<212> TYPE: DNA
<213> ORGANISM: artificial sequence
<220> FEATURE:
<223> OTHER INFORMATION: Primer LPH1

```

```
<400> SEQUENCE: 2
```

```
aaagaattcg ttctagaaa atggagctgt cttggcatgt ag 42
```

```

<210> SEQ ID NO 3
<211> LENGTH: 40
<212> TYPE: DNA
<213> ORGANISM: artificial sequence
<220> FEATURE:
<223> OTHER INFORMATION: Primer CLPH1300

```

```
<400> SEQUENCE: 3
```

```
ttgcatgcat aagcttaaat ttctgtcggg ttccccagtc 40
```

```

<210> SEQ ID NO 4
<211> LENGTH: 25
<212> TYPE: DNA
<213> ORGANISM: artificial sequence
<220> FEATURE:
<223> OTHER INFORMATION: Primer LPH2841

```

```
<400> SEQUENCE: 4
```

```
aaagacaatg ccaactggaga catcg 25
```

```

<210> SEQ ID NO 5
<211> LENGTH: 25
<212> TYPE: DNA
<213> ORGANISM: artificial sequence
<220> FEATURE:
<223> OTHER INFORMATION: Primer CLPH3600

```

-continued

<400> SEQUENCE: 5

tgaacctctt ctcttctca gtgaa

25

<210> SEQ ID NO 6

<211> LENGTH: 25

<212> TYPE: DNA

<213> ORGANISM: artificial sequence

<220> FEATURE:

<223> OTHER INFORMATION: Primer LPH3541

<400> SEQUENCE: 6

aactgcagca cttagccacc tcccg

25

<210> SEQ ID NO 7

<211> LENGTH: 26

<212> TYPE: DNA

<213> ORGANISM: artificial sequence

<220> FEATURE:

<223> OTHER INFORMATION: Primer CLPH5470

<400> SEQUENCE: 7

atgctttggg gatccttggc aagaga

26

<210> SEQ ID NO 8

<211> LENGTH: 25

<212> TYPE: DNA

<213> ORGANISM: artificial sequence

<220> FEATURE:

<223> OTHER INFORMATION: Primer LPH5461

<400> SEQUENCE: 8

acccttctct gccaaaggatc cccaa

25

<210> SEQ ID NO 9

<211> LENGTH: 40

<212> TYPE: DNA

<213> ORGANISM: artificial sequence

<220> FEATURE:

<223> OTHER INFORMATION: Primer CLPH6270

<400> SEQUENCE: 9

aaaagaattc ggacagtctt ctgtttttat tttcgaaaa

40

What is claimed is:

1. A composition for treating lactose intolerance in a mammal, comprising *Lactobacillus acidophilus* bacteria that are genetically modified to express a mammalian lactase-phlorizin hydrolase enzyme under the control of a CMV promoter, wherein said genetically modified *Lactobacillus acidophilus* bacteria have an enhanced ability to adhere to the intestinal surface than *Lactobacillus acidophilus* bacteria that are not genetically modified.

45

2. The composition of claim 1, wherein said intestinal surface is within the small intestine.

3. The composition of claim 1, wherein said *Lactobacillus acidophilus* bacteria are present as a live suspension.

50

4. The composition of claim 1, wherein said *Lactobacillus acidophilus* bacteria are present as a lyophilized powder.

5. The composition claim 4, further comprising an acid resistant coating.

* * * * *